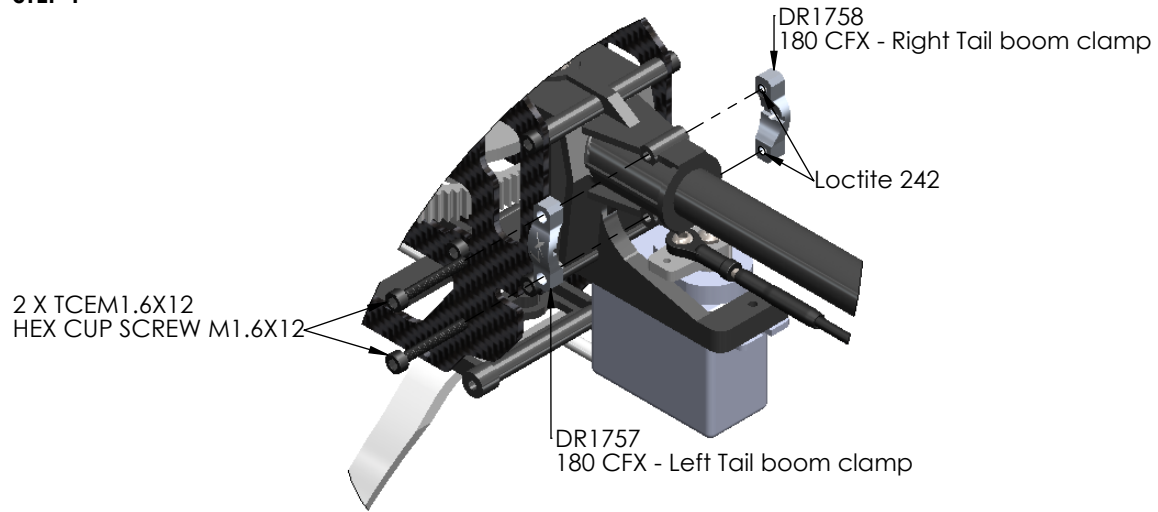
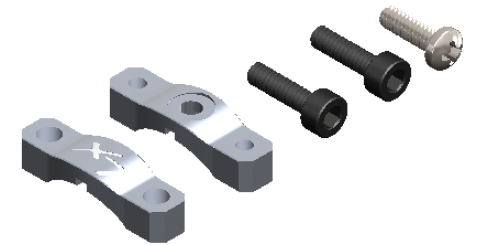


LX1628 180CFX - ULTRA CLAMP STD BOOM SUPPORT - SILVER
 LX1629 180CFX - ULTRA CLAMP STD BOOM SUPPORT - RED
 LX1630 180CFX - ULTRA CLAMP STD BOOM SUPPORT - BLACK

STEP 1

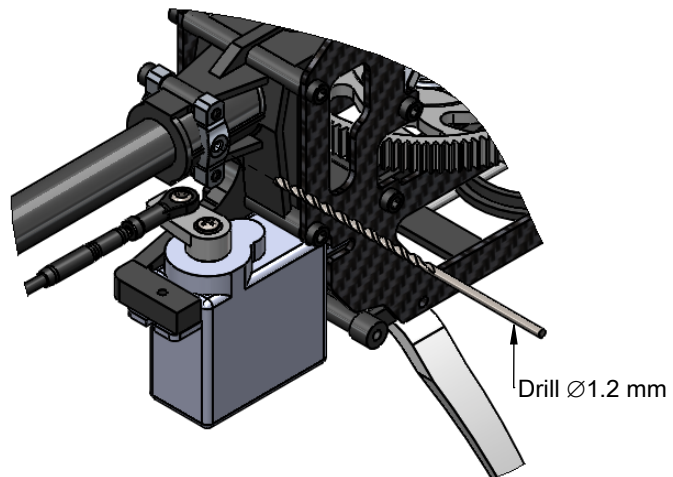


View



STEP 2

NOTE: In order to use optional supported locking pin ,
 assembly the parts per manual and drill a 1.2 mm diameter
 hole as shown. Drill operation must be performed with boom
 but NOT toqeu shaft. This to avoid eventually damage. Once
 drill is finalized, install the supported Self Tapping Screw 1.6x4



STEP 3

